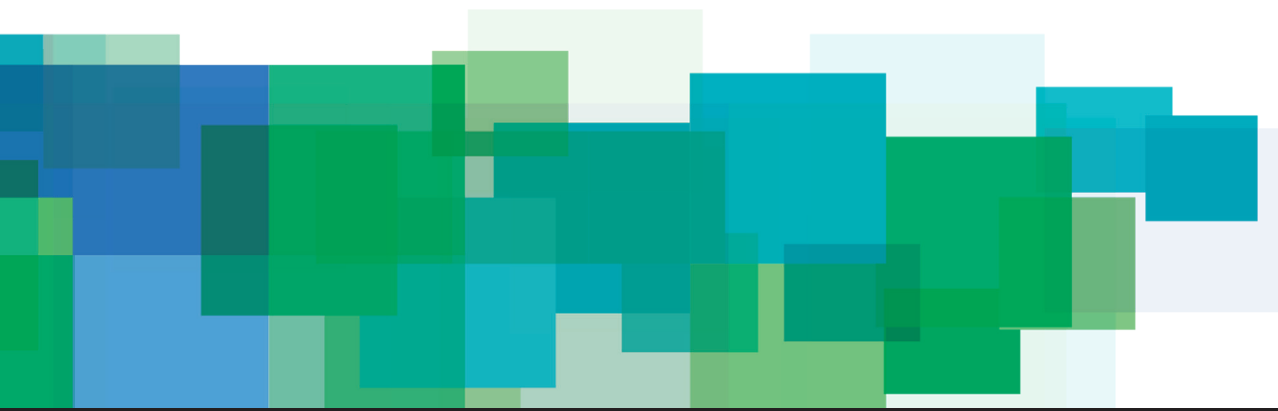


▶ blackline ▶

an OBL brand



WATER DIVISION



Motor UNEL-MEC:

Motor UNEL-MEC standard 3 phase, 50/60Hz. Single phase and ATEX options available. **Permits standardization and quick std motor availability on site.**

Aluminum anodized casing:

Improved corrosion resistance against aggressive fumes. **Extends pump life and lowers life-cycle cost.**

3pcs threaded connector (PP models), Metric or Inch standard:

BSP or NPT thread allows easy and simple connection to pipeline. **Reduces cost and time of installation and maintenance.**

Manual adjustment standard via dial handwheel or electric actuator as optional available. Enhances application flexibility.

Spring return mechanism with oversized bearing. Extends pump life and lowers life-cycle cost.

Large number of pumphead locking screw (12 pcs). Reliable and effective sealing during operations.

1 size diaphragm fit all, same valve & seats for all models: Less number of parts to procure and keep on stock. Better parts availability and lower cost of ownership.

ATEX

All models comply to ATEX (2014/34/CE) Group II, Category 3 (zone 2/22).

Technical data

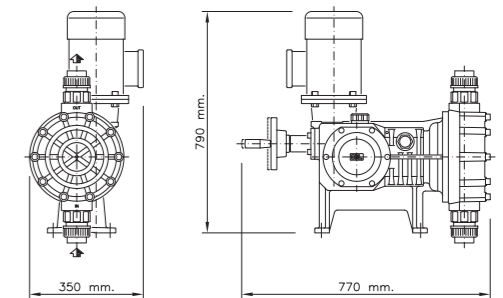
Ø DIAPH./STROKE	50 Hz			60 Hz			MAX PRESS. bar				CONNECTIONS					
	TYPE	STROKES / 1	MAX FLOW RATE l/h	TYPE	STROKES / 1	MAX FLOW RATE l/h	1,5 kW		2,2 kW		THREADED			FLANGED		
							WORK.	MAX	WORK.	MAX	A	P	PP	A	P	PP
10 239	ME 750	60	750	ME 600	48	600	5	6	6	7	/	/	1-1/2" BSP f	DN 40	DN 40	DN 40
	ME 1000	82	1000	ME 880	72	880	5	6	6	7				1-1/2" ANSI	2" ANSI	2" ANSI
	ME 1250	100	1250	ME 1200	96	1200	4	5	5	6						
	ME 1500	123	1500	ME 1475	121	1475	3	4	4	5						

Material of construction

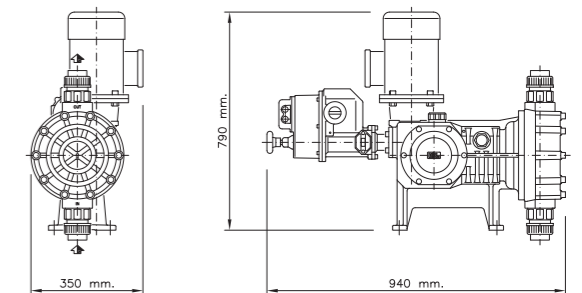
COMPONENTS	A	P	PP
PUMP HEAD	AISI-316L	PVC	PP
DIAPHRAGM	PTFE	PTFE	PTFE
VALVE GUIDE	AISI-316L	PP	PP
VALVE SEAT	AISI-316L	PVC	PVC
VALVE (BALL)	AISI-316L	PYREX	PYREX
VALVE HOUSING	-	PVC	PP
VALVE SEAL	FPM	FPM	FPM
FLANGE	AISI-316L	PVC	PVC

Overall dimensions

SINGLE PUMP - Manual Adjustment



SINGLE PUMP - Electric Actuator Adjustment



Sectional view

THREADED CONNECTIONS

PP PP



FLANGED CONNECTIONS

PP PP



P PVC



A AISI-316L



► Safe area

On all pumps M, ME, R, XRN it is possible to automate the control system by installing the OBL's electric actuator Z type (ZC or ZP).

ELECTRIC ACTUATOR CHARACTERISTICS

- IP 66 standard
- 115/230V – 1 – 50/60 Hz
- 4-20 mA feedback signal
- Manual emergency override
- Anticondensation heater (on demand)
- External automatic/manual selector (on demand)
- Flow-rate limiter (Q.max trimmer) allows to reduce the pump maximum flow-rate (corresponding to 20 mA command signal) up to 50% of the nameplate rated capacity.

The flowrate is adjusted according to following input signals:

- 4-20 mA, 0-20 mA, 20-4 mA and 0-10 V
- Pulses (0÷2 Hz - 0÷30 Hz)
- RS 485 communication protocol
- Profibus DP-V0



OBL DESIGN

oblblackline.com

OBL S.r.l.

Via Kennedy, 12
20090 Segrate (MI) - Italy
Tel. +39.02.269191
Fax +39.02.2133893
obl.info@idexcorp.com
oblpumps.it

